

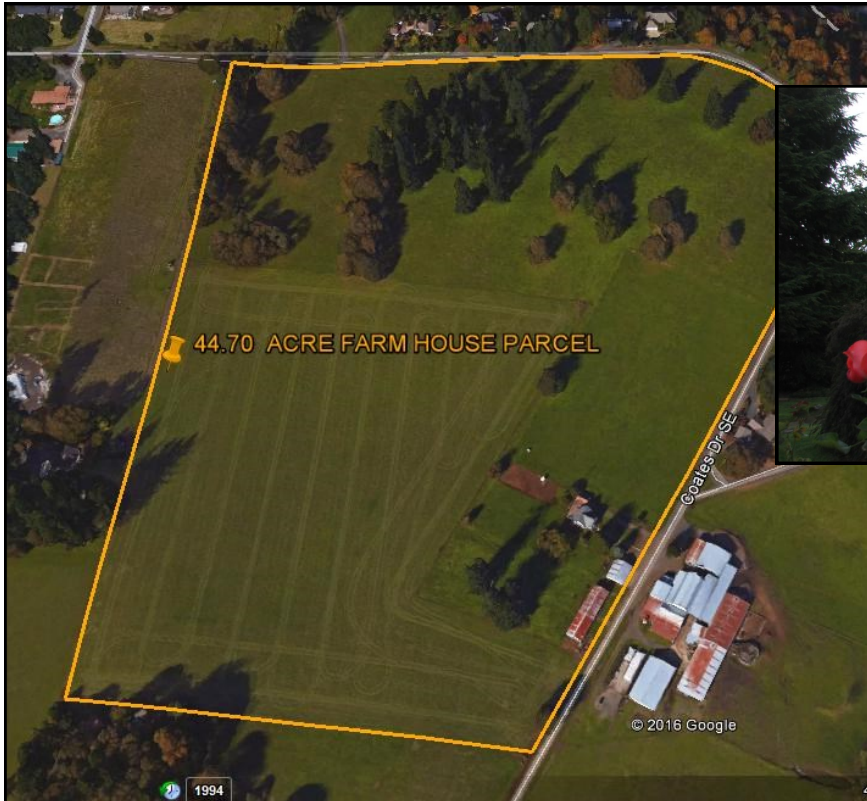
FOR SALE

44.7± Acres

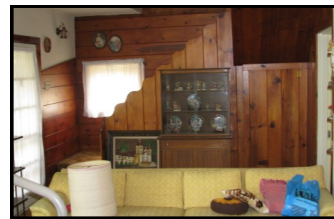
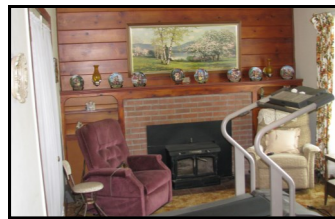
6221 Coates Crest Way — \$499,250

Classic Farmhouse Built in 1932

Well cared for home with lots of future potential. Acreage is currently used for grazing and leased for orchard grass seed production. Multiple parcels for sale. Check with Listing Agent for details. (678427)



- 4 Bedrooms, 2 Baths, 2382± SF
- Main Floor has LR, DR, Kitchen, Family Room, Utility Room, Master BR and Bath
- Fireplace in LR, Certified Woodstove in FR
- 2nd Floor has Bath plus 3 Bedrooms
- Basement Currently Used for Storage
- Forced Air Heat
- Covered Patio, 2 Good Wells
- Detached 2-Car Garage & Workshop



Visit CommercialInvestmentAssociates.com for Additional Information



**Commercial
Investment
Associates, LLC**
Real Property Brokers

Mitch Teal, Principal Broker

Project Coordinator - Consultant

1418 Arabian Avenue SE, Salem, OR 97317

Cell (503) 851-8325 (TEAL)

Mitch@CommercialInvestmentAssociates.com

Information deemed reliable but not guaranteed. Buyer to verify information.

