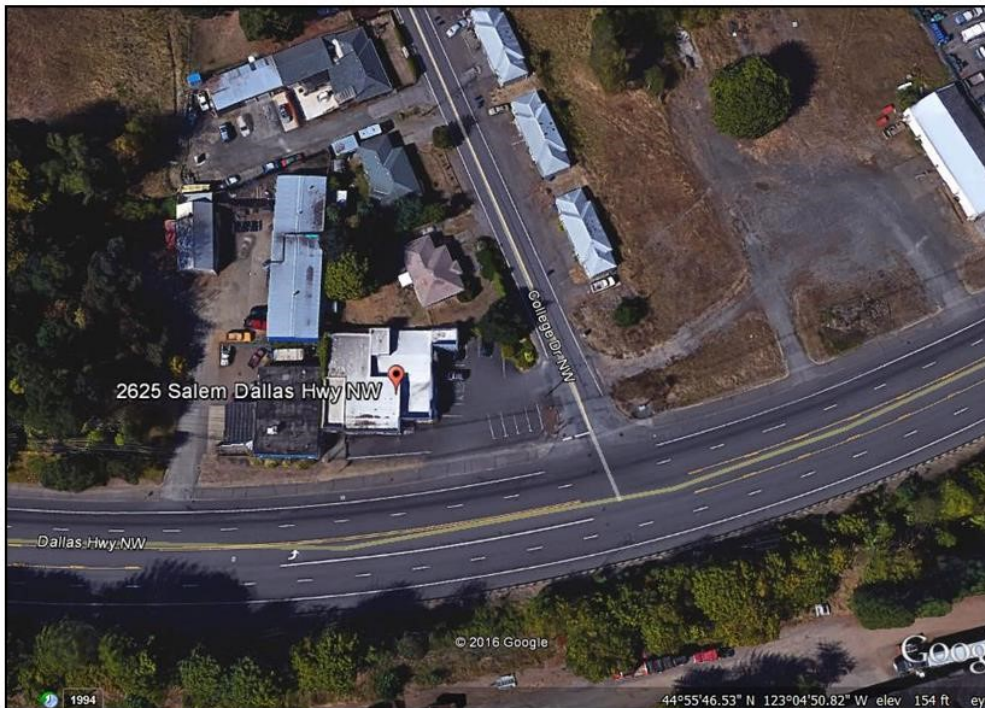


FOR SALE

\$675,000

2625 Salem-Dallas Hwy NW, Salem



Features Include:

- ◆ Commercial Zoning
- ◆ 5711± Square Feet
- ◆ 100x130 Lot Size
- ◆ 250 Feet of Frontage
- ◆ Far Corner Exposure
- ◆ 14 Parking Spaces
- ◆ Suitable for Office, Distribution Warehouse, Flex Space, Office/Showroom or Research & Development
- ◆ IRC 1031 Exchange Anticipated
- ◆ Showings by Appt Only to Pre-Qualified Buyers
- ◆ Traffic Count 33,500 on 11/30/12



Highway Frontage

This is a Commercially Zoned concrete block building previously used by Touch of Mink Soap & Lotion Company and later to manufacture cabinets. Currently approximately 1/3rd of the building is a marijuana dispensary. The property is well exposed and offers on site paved parking, easy access, great signage opportunities and far corner visibility. MLS#712000

Visit CommercialInvestmentAssociates.com for Additional Information



**Commercial
Investment
Associates, LLC**
Real Property Brokers

Mitch Teal, Principal Broker

Project Coordinator - Consultant

1418 Arabian Avenue SE, Salem, OR 97317

Cell (503) 851-8325 (TEAL)

Mitch@CommercialInvestmentAssociates.com

Information deemed reliable but not guaranteed. Buyer to verify information.

